



Fisheries Characterization within the Coastal Virginia Offshore Wind (CVOW) Development Site

Reece Aponte, Dave Rudders, & Andrew Scheld

Fisheries Researcher

VIMS



Coastal Virginia Offshore Wind



VIMS Plan of Attack



Learn from Experienced Partners



Connect with Knowledgeable Fishermen to inform the survey design for both the Black Sea Bass and Whelk



Dominion Energy

Develop a Sampling Framework to Support Early Construction Data Collection

Survey Target Species



Black Sea Bass (*Centropristis striata*)

- ❖ Active Commercial and Recreational fishery
- ❖ Current status: Stocks are not overfished and not subject to overfishing



iNaturalist



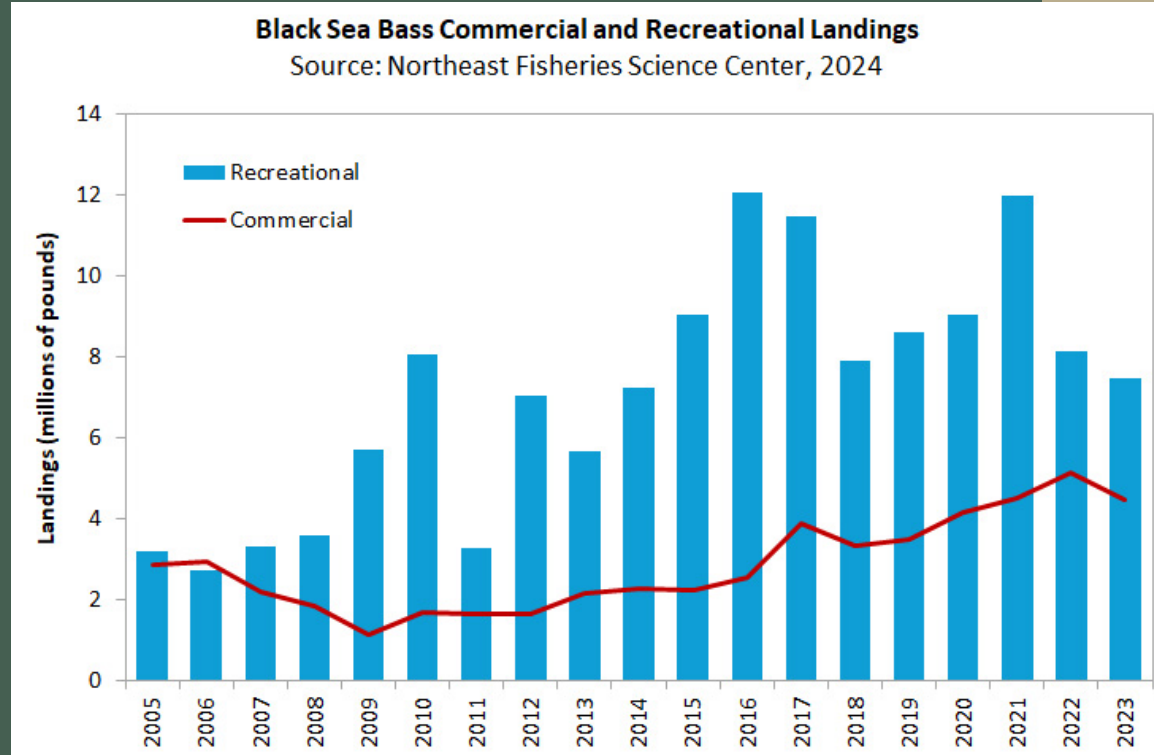
Terrie Simmons-Ehrhardt

Whelk (*Busycon canaliculatus* and *Busycon carica*)

- ❖ Channeled and Knobbed whelk supports a robust commercial fishery
- ❖ Limited understanding of stock structure, status, and dynamics

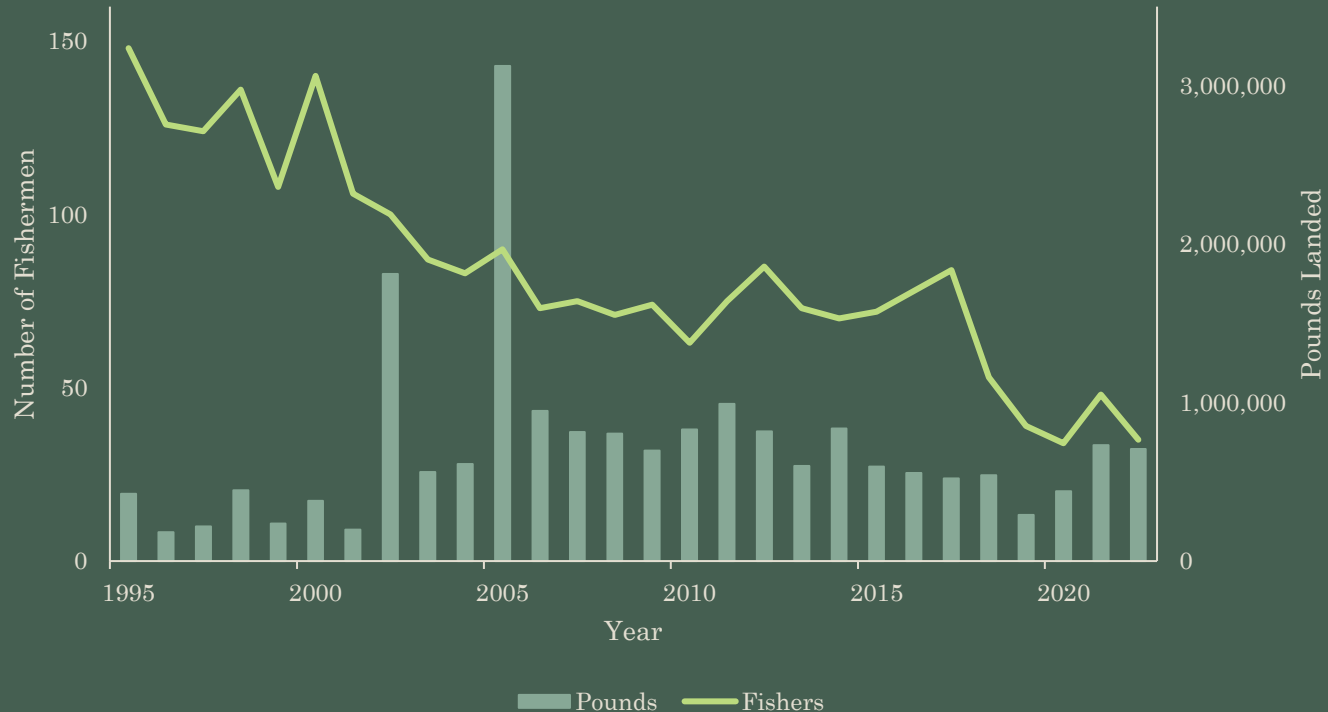
Fisheries Background - Black Sea Bass

- ❖ In 2023, Virginia's commercial landings were 681,703 pounds valued at ~\$1.7 million
- ❖ Recreational landings totaled ~1 million pounds



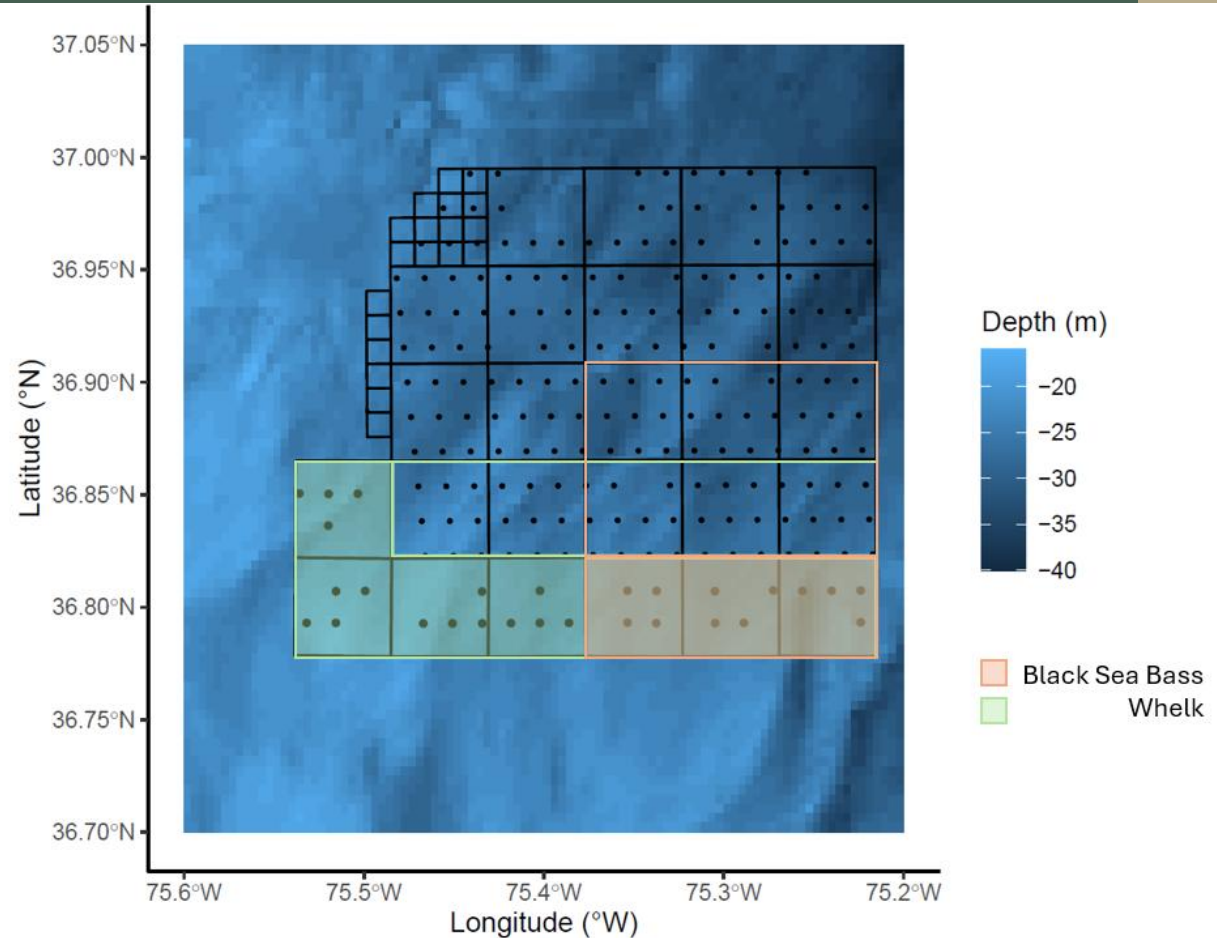
Fisheries Background - Whelk

Whelk Fishery Participation and Landings



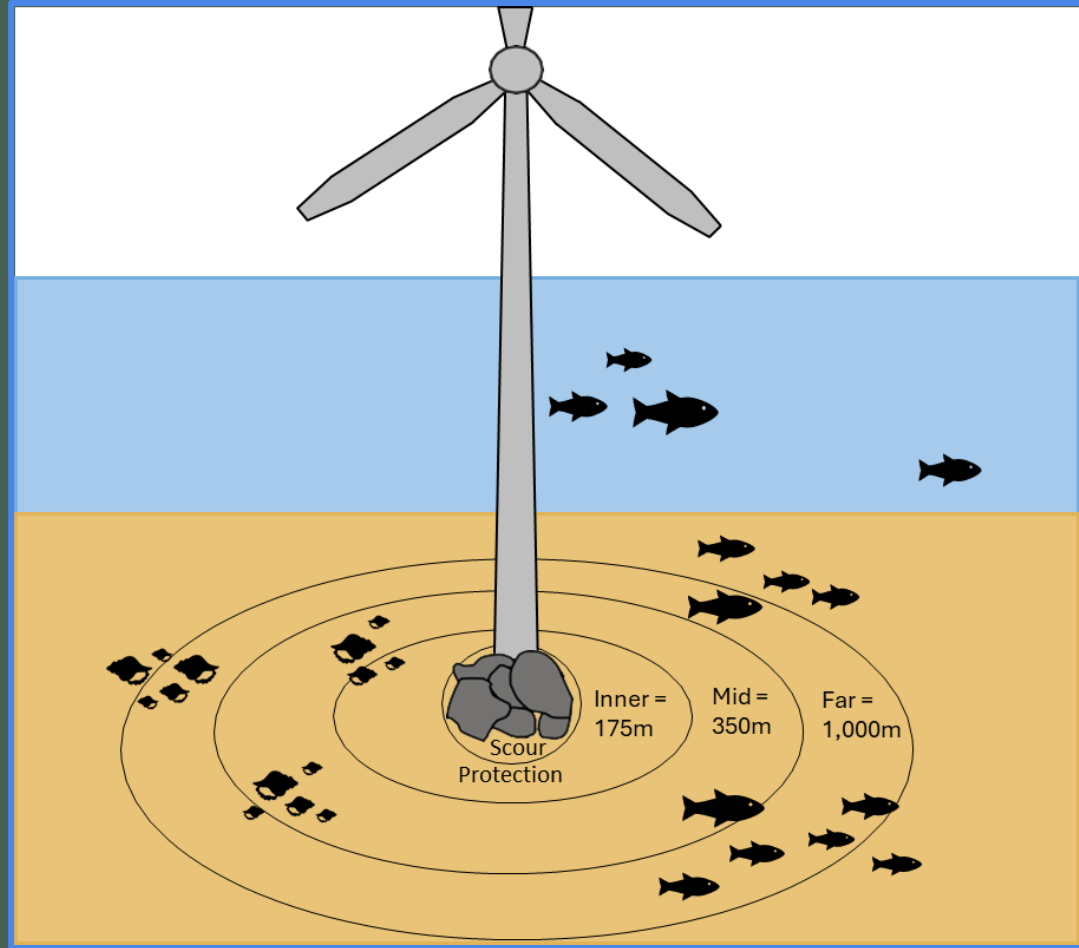
Survey Area and Sampling Design

CVOW Lease
with Highlighted
Fisheries
Sampling Areas

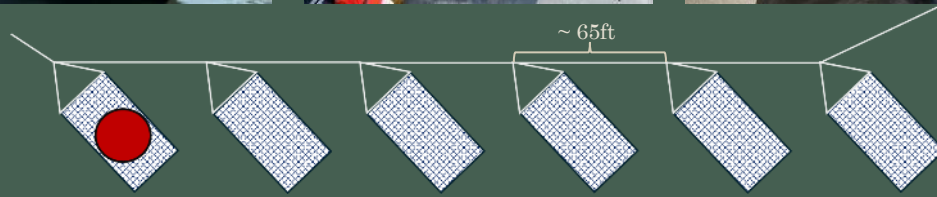


Survey Area and Sampling Design

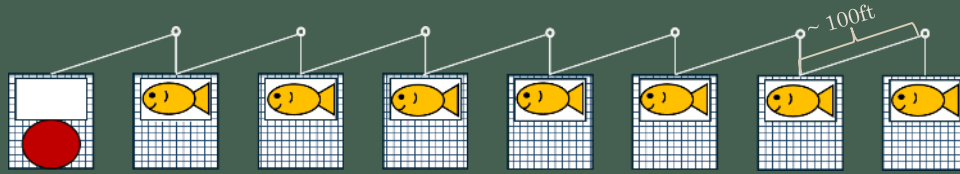
Before After Gradient
(BAG) sampling
method



Survey Methods



Survey Methods



Total Catch



Acknowledgments



Coastal Virginia
Offshore Wind

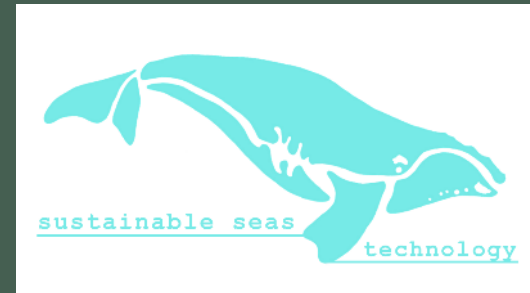


RUTGERS



**WILLIAM
& MARY**

**VIRGINIA INSTITUTE OF MARINE SCIENCE
MARINE ADVISORY PROGRAM**



Reece Aponte
reaponte@vims.edu/804-684-7174