



ROSA Data Governance Briefing

May 29, 2025

Data Governance Briefing

During the session, we will cover:

- Core tenets and policies of our updated Data Governance strategy
- How we work to ensure our research outputs are Findable, Accessible, Interoperable, and Reusable (FAIR)
- Progress on practical guidance on data sharing, privacy, and security measures
- Opportunities for collaboration and integration with states or your organization's existing data practices

A large, powerful ocean wave is captured in mid-break, with a massive wall of water curling over and sending a spray of white foam high into the air. The water is a deep, vibrant blue-green. The sky above is a pale, clear blue. A semi-transparent teal banner covers the bottom third of the image, providing a background for the text.

Who is ROSA?

At the intersection of ocean development & fisheries



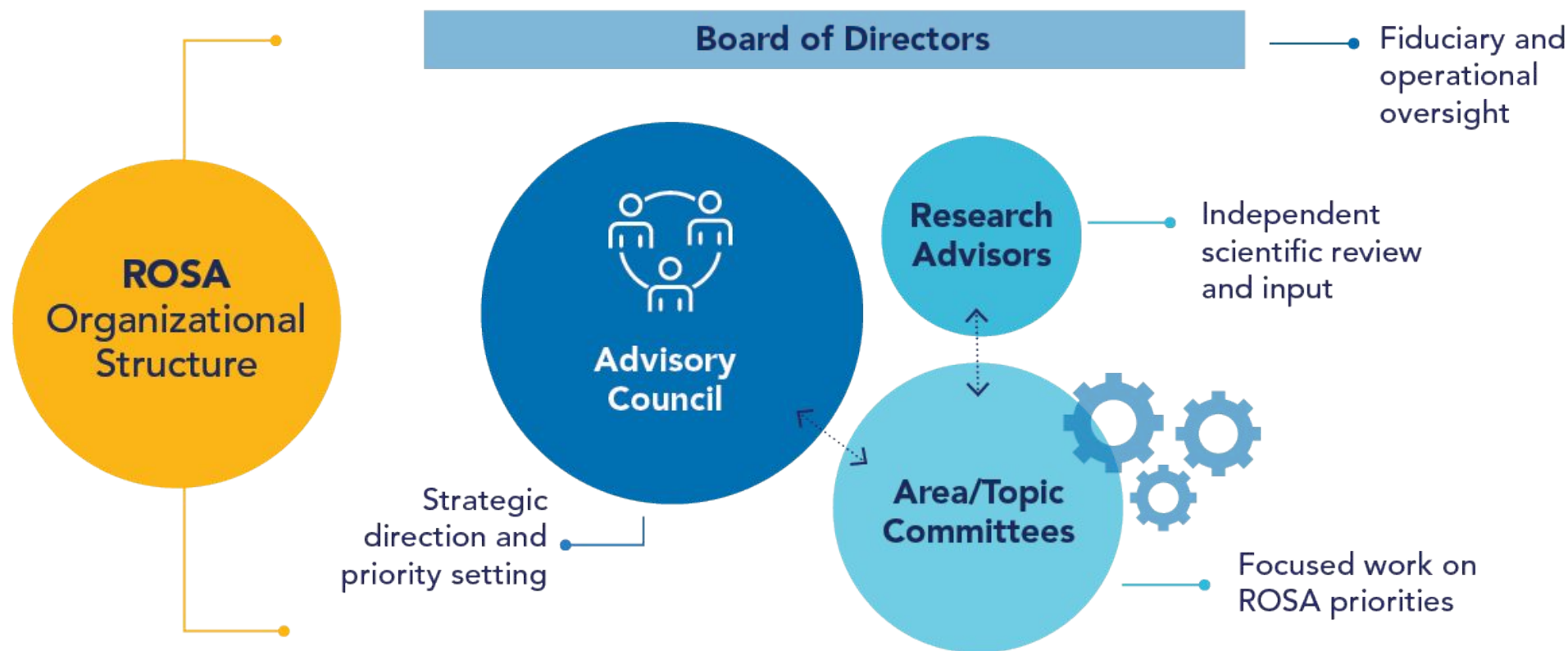
**SCIENTIFIC
COLLABORATIVE
OBJECTIVE
TRANSPARENT**

Inception:

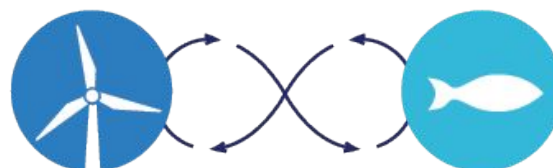
Formed in early 2019 as a 501(c)3 through partnership between RODA and OSW developers

We serve as an objective resource for all sectors and **facilitate the coordination of regional scientific research** to collaboratively and **efficiently deepen understanding.**

ROSA's Organizational Structure



COLLABORATION + SCIENCE = IMPROVED UNDERSTANDING



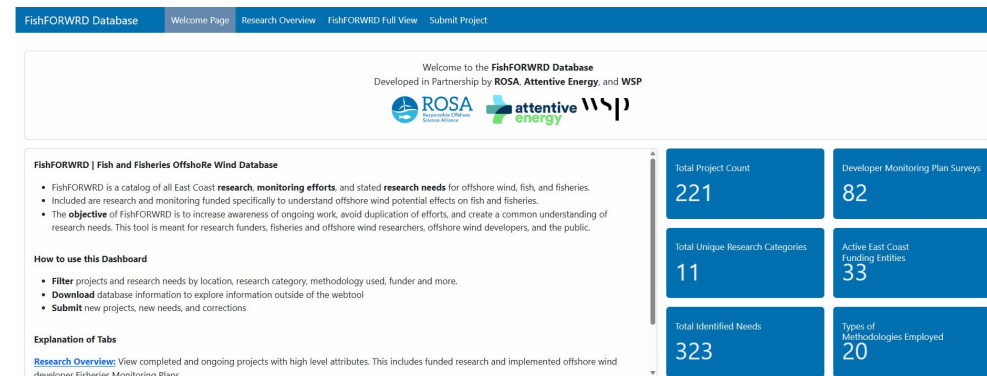
Relevant Deliverables



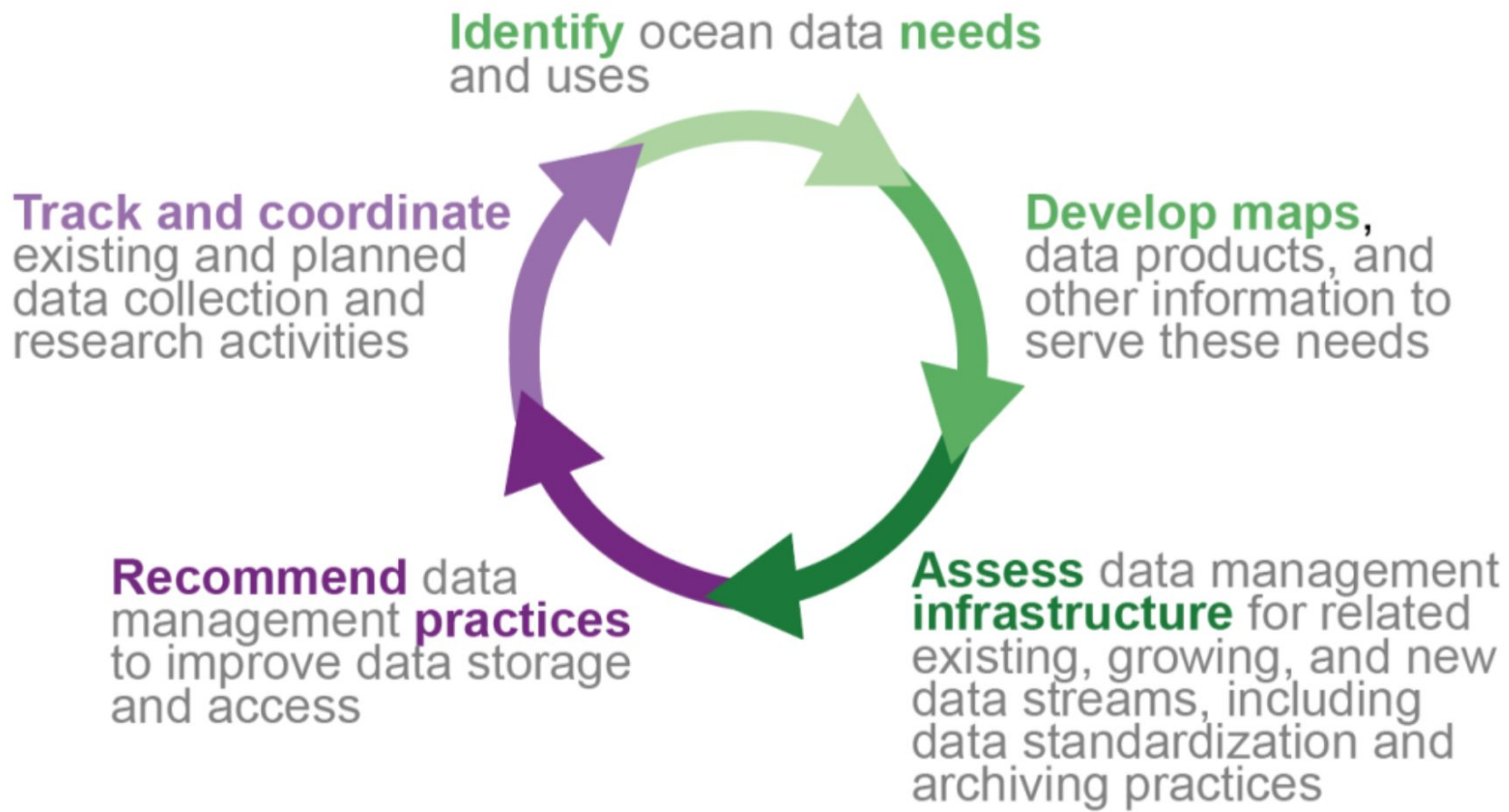
1. Regional research program

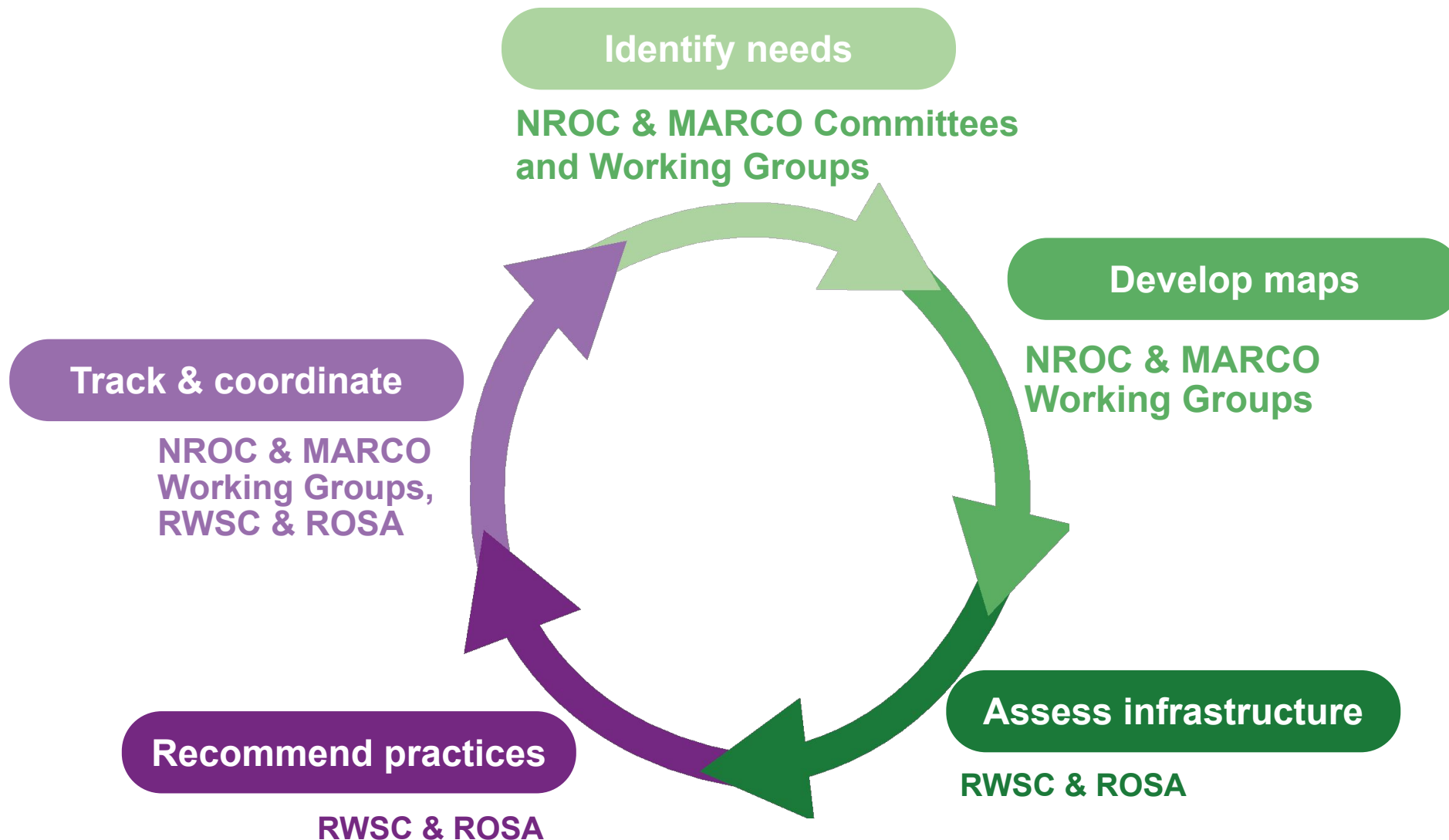


2. Fish & Fisheries Offshore Wind Research Database (FishFORWRD)



3. ROSA Data Governance Program

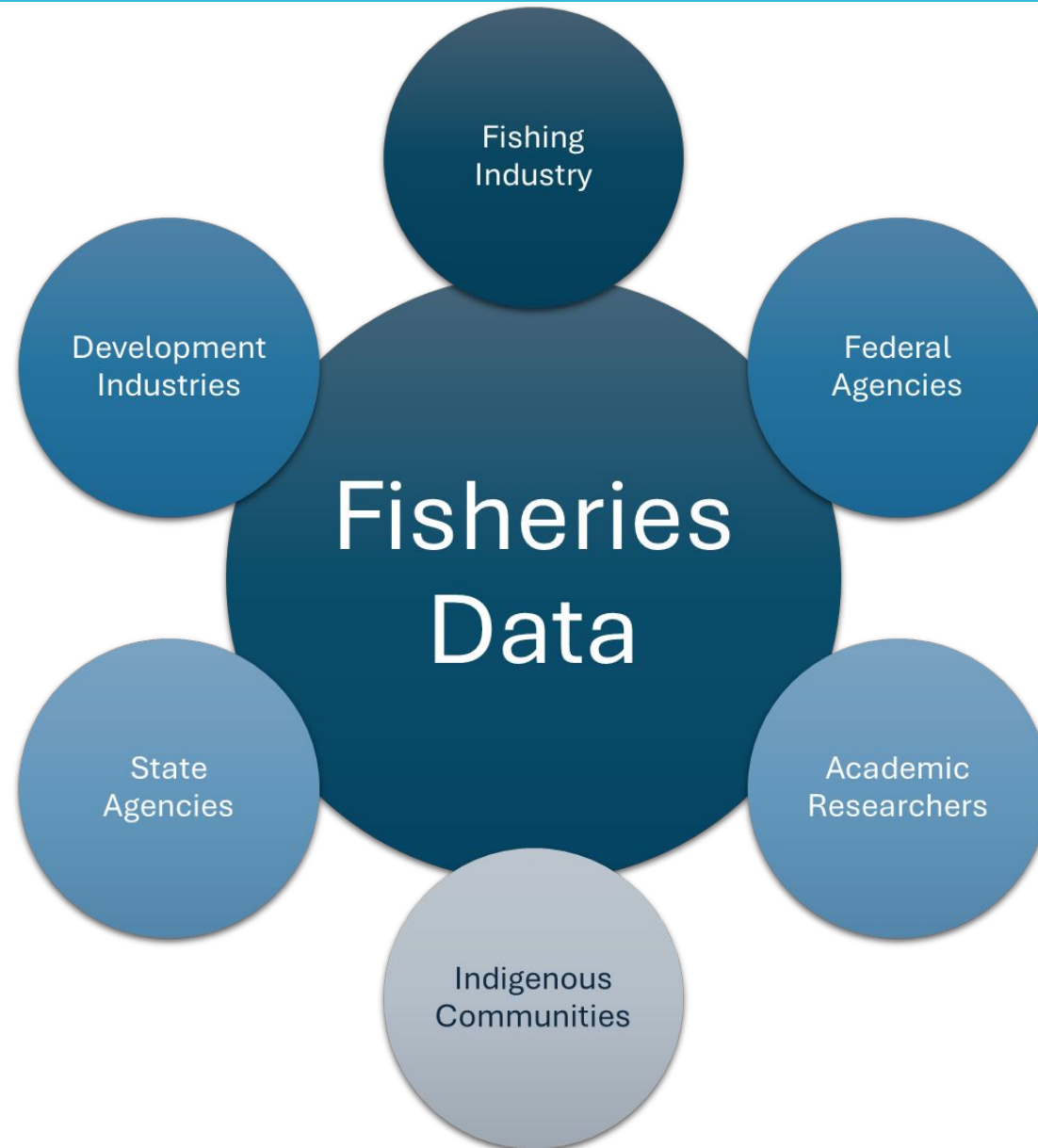






What is Data Governance & why does ROSA prioritize it?

Fisheries Data



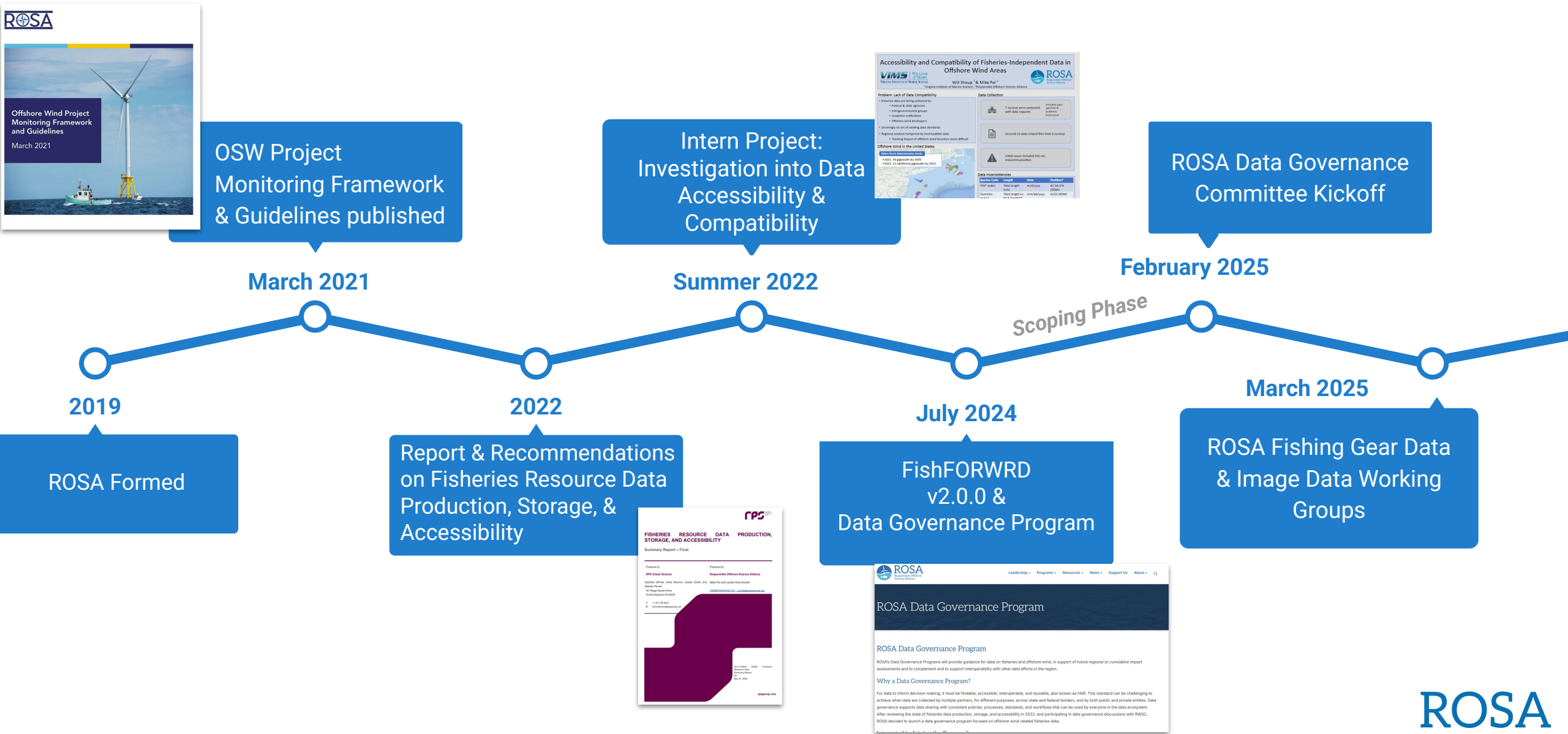
What is Data Governance?



- The structures and policies necessary to insure the desired management of data assets, including
 - structures for how decisions are made about data
 - how people and processes are expected to behave in relation to data.
- ROSA will provide guidance for data on fisheries, offshore wind, and ocean development in support of future regional or cumulative impact assessments and to complement and to support interoperability with other data efforts in the region.
- In practical terms: finding out where people are and helping them get to where we want them to be

Data must be Findable, Accessible,
Interoperable, and Reusable (FAIR)

Data Governance Waypoints



Fish & Fisheries Offshore Wind Research Database (FishFORWRD)



Welcome to the **FishFORWRD Database**
Developed in Partnership by **ROSA**, **Attentive Energy**, and **WSP**



FishFORWRD | Fish and Fisheries OffshoRe Wind Database

- FishFORWRD is a catalog of all East Coast **research, monitoring efforts**, and stated **research needs** for offshore wind, fish, and fisheries.
- Included are research and monitoring funded specifically to understand offshore wind potential effects on fish and fisheries.
- The **objective** of FishFORWRD is to increase awareness of ongoing work, avoid duplication of efforts, and create a common understanding of research needs. This tool is meant for research funders, fisheries and offshore wind researchers, offshore wind developers, and the public.

How to use this Dashboard

- **Filter** projects and research needs by location, research category, methodology used, funder and more.
- **Download** database information to explore information outside of the webtool
- **Submit** new projects, new needs, and corrections

Explanation of Tabs

[Research Overview](#): View completed and ongoing projects with high level attributes. This includes funded research and implemented offshore wind developer Fisheries

Total Project Count

221

Developer Monitoring Plan Surveys

82

Total Unique Research Categories

11

Active East Coast
Funding Entities

33

Total Identified Needs

323

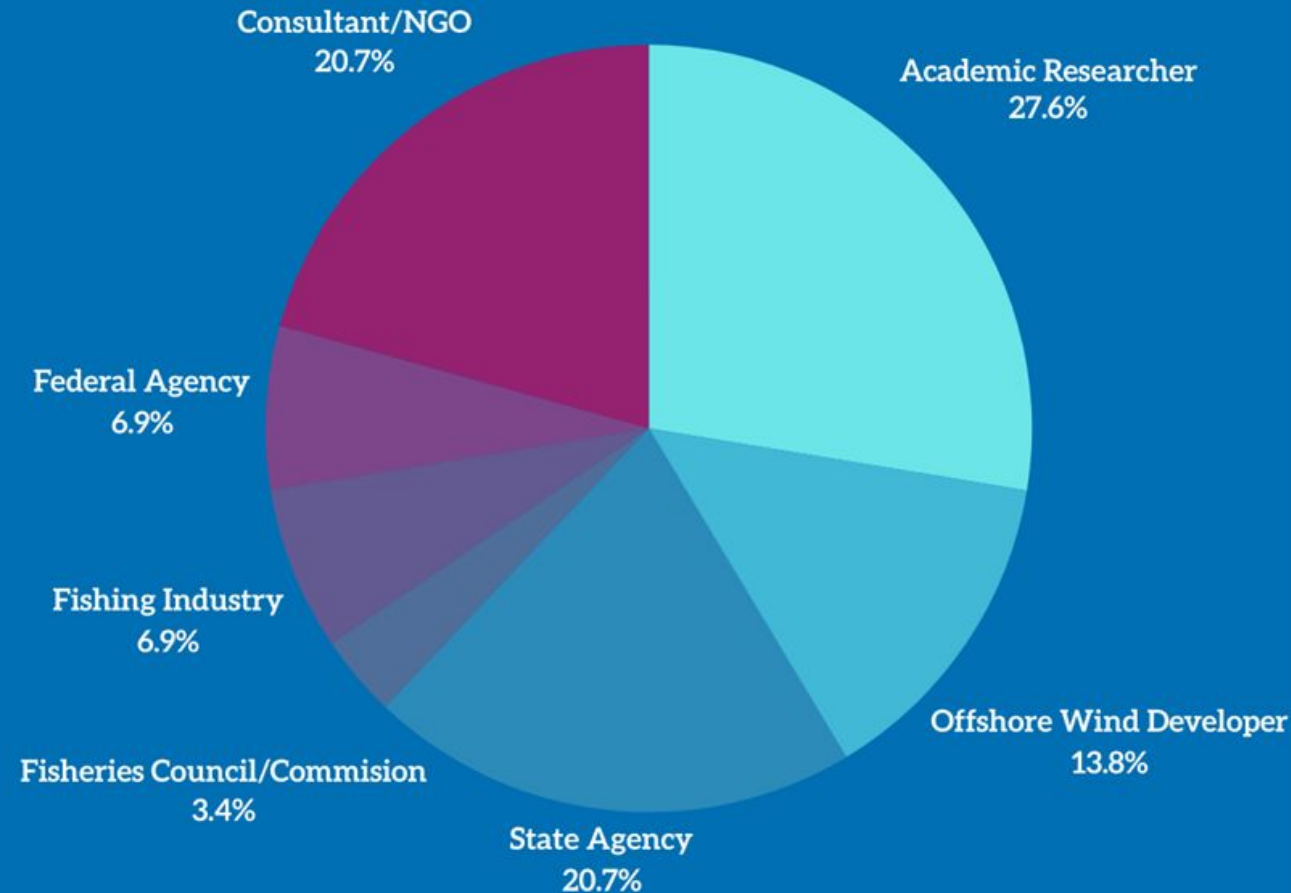
Types of
Methodologies Employed

20

Research Gaps Analysis & Rankings

RESEARCH CATEGORY RANKINGS

- 1 CUMULATIVE IMPACT & FISHERIES MANAGEMENT IMPLICATIONS
- 2 FISHERIES ACCESS & GEAR MODIFICATION
- 3 SOCIOECONOMIC IMPACTS
- 4 SPECIES DISTRIBUTION/COMPOSITION
- 5 FISHERIES ENGAGEMENT & CAPACITY BUILDING
- 6 HABITAT FRAGMENTATION/MODIFICATION
- 7 DATA MANAGEMENT
- 8 SOUND/VIBRATION IMPACTS
- 9 SURVEY ADPATATION
- 10 RESOURCE MONITORING
- 11 EMF



RANKING SURVERY SEPTEMBER 2024

What's in FishFORWRD

221
projects



82

individual surveys
from developer
fisheries & benthic
monitoring plans

139

research and
monitoring
projects

323
research
needs

ROSA Data Governance Program



Goal: To develop guidance for reuse of offshore wind fisheries data, in support of future regional or cumulative impacts assessments.

Focus on data streams from methodologies used in monitoring plans and OSW research in FishFORWRD

Leveraging data expertise of Intertidal Agency

Coordinate with ROSA RFP policies and requirements and RWSC

Outcomes:


- standardized data management practices
- support interoperability and reuse with other data efforts in the region

Supported by Avangrid, Ørsted, Attentive Energy, and AKRF

Two Primary Pathways to Improve Data Governance



**ROSA-funded
research**



**Guidance for
ocean
research
community**

ROSA Data Policy



Designed to

- help inform policies, contracts, and agreements so that wildlife, fisheries, and offshore wind research can **advance knowledge**, be **used in decision-making**, and have **wide utility** to researchers, government agencies, and others
- encourage other funders to consider adopting this language to standardize data availability of wildlife and fisheries offshore wind research.

ROSA Data Policy

Sections

- **Ownership** of research outputs
- **Non-exclusive license** to use, reproduce, copy, modify, transmit, distribute, perform, display
- **Data Sharing**
 - Annual progress report
 - Data Management & Sharing Plan (DMSP)
 - Share data within one year of data collection and data outputs to repository and assign a unique identifier (e.g., DOI)
- **Confidential Information**
 - No proprietary information in research outputs, opportunity for partners to review
 - Data use agreements for accessing and using third party data in research

Data Management & Sharing Plan (DMSP)

Highlights of a DMSP

- Roles & responsibilities around data
- Lists of all data, metadata, and data products to be produced/created
- Data standards used
- Data licenses and access restrictions
- Timeline and plan for sharing the data
- Plans for stewardship & preservation

A formal document that outlines **how research data will be handled, stored, shared, and preserved** throughout the lifecycle of a project. The plan should demonstrate the researcher's commitment to good data management practices (e.g., FAIR: Findable, Accessible, Interoperable, Reusable) and **ensure that data are available for future research.**

Adapted from draft RWSC DMSP, ROSA is using a Pre-Award DMSP in its RFP

Data Governance Committee



Mission

- to provide advice and recommendations for ROSA staff and leadership
 - a. by identifying policy and process needs related to standardized data collection, documentation, storage, and reuse of data on fisheries and offshore wind energy development.
 - b. collaborate and coordinate with other organizations and agencies, and the broader research and management community, to facilitate knowledge sharing and avoid duplication of efforts.

Kickoff meeting in February 2025 with 43 attendees from broad range of stakeholders

For fisheries or offshore wind related data...



**Where do
you post or
publish
your data?**

**No obvious
repository for all
fisheries-
independent
data now**

**Some data types
have
well-established
data repositories**

Animal telemetry data

OTN & nodes
ACT-MATOS & FACT
ATN

Passive acoustic monitoring data

Passive Acoustic
Data Archive

But what about?

- BRUV video files
- Bottom trawl surveys
- Other fishing gears
- eDNA
- Social science data
- and other data types...



Higher
priority

Lower
priority

Fishing Methods Group

Bottom Trawl

Trap/Pot

Gillnet

Other Fishing Gear

Dredge

Ichthyoplankton
Survey

Image Data Group

ROV/video/stills

Baited Remote
Underwater Video
(BRUV)

drop cameras
and habcam

Acoustic
Telemetry

eDNA

Modeling

Social Science



ROSA team to dig into
FishFORWRD for more

DG Working Groups

Where should ROSA recommend people publish fisheries-related data?

How should data be organized to maximize discovery and reusability?

What else can ROSA do to support this?

For the specific
sampling
method, we
want work
groups to
discuss &
recommend

- Documentation (including metadata)
- Metadata standards and recommended repositories
- How to organize and structure datasets within a 'project'
- Any other specific info to be included (i.e. special fields, tags)
- Catalog of experimental designs used
- How to be good managers for our future selves?
- How to preserve and publish data to answer regional questions?

Image Working Group

- Two meetings so far, third planned
- Good representation from primary data collectors
- Discussed range of data sources in area
- Which data are collected from each image
- Challenges to sharing
- Opportunity to collectively use images to train machine learning
- Processing methods
- Considered candidate repositories
- Discussed data sharing amendments to existing agreements

Fishing Gear Data Working Group

- Two meetings so far, third planned
- Discussed options for repositories
- Explored scenarios where sharing data would illustrate possibilities for deeper understanding
- Identified the need for clear, consistent data licensing agreements
- Cross-walk of metadata from several trawl surveys
 - Metadata tools are needed
- Assessment of number and size of data holdings

Timeline



FEB

Up to 3
work
groups
formed

MAR - JUN

Work groups draft
recommendations,
with support from
Intertidal & ROSA

JUL - SEP

drafts out for
community
comment, feedback
incorporated

OCT

v1 materials
released by
ROSA

Timeline



FEB

Up to 3
work
groups
formed

MAR - JUN

Work groups draft
recommendations,
with support from
Intertidal & ROSA

JUL - SEP

drafts out for
community
comment, feedback
incorporated

OCT

v1 materials
released by
ROSA



DG Sponsors'
Forum

Social science, eDNA?

Data Governance Sponsors' Forum



- Early opportunity to learn outcomes from the Working Groups
- Hands-on data guidance
- Project-specific data management support

A large, powerful ocean wave is captured in the middle of a break, with white foam and spray visible at the crest. The water is a deep, dark blue. The sky is a pale, clear blue. A semi-transparent teal band runs horizontally across the lower half of the image, serving as a background for the text.

Discussion