



RESPONSIBLE OFFSHORE
SCIENCE ALLIANCE

ROSA Advisory Council Meeting

June 24, 2022

Agenda



COOPERATION
COLLABORATION
SCIENCE BASED
DATA DRIVEN

- 12:30 Welcome
- 12:40 Challenges to Pre-Construction Fisheries Surveys
- 1:20 Researchers Response to the Challenge
- 2:00 BREAK
- 2:05 Follow-up on Fisheries Resource Data Production, Storage, and Accessibility Report
- 2:45 Regional Research Prioritization Framework
- 2:55 Summary of Meeting Outcomes and Next Steps
- 3:00 Adjourn



Brief Updates



ROSA Updates



- Welcome Will Shoup, ROSA's first intern!
- Upcoming meetings
- New draft clam survey guidance

Criteria for prioritization of offshore wind-related environmental and fisheries research



- Online meeting Wednesday, July 13, 2022; 10:30am-12pm ET
- Joint meeting with NY E-TWG and RWSC
- Focus on general prioritization criteria and processes to help identify priority studies for funding in the immediate term
- Each funding entity or research entity will likely have its own specific criteria for prioritizing research and monitoring efforts

State of the Science Workshop 2022

2022 State of the Science Workshop

*Building on Existing
Knowledge and Emerging
Collaborations*

July 26-28, 2022

- State of the Science Workshop on Wildlife and Offshore Wind Energy
- Workshop on **Tuesday, 26 July 2022 1-5pm ET**
- Workshop focus on emerging non-extractive sampling
- Hybrid participation- in person or remote on zoom

<https://www.nyetwg.com/2022-workshop>



American Fisheries Society Annual Meeting



- August 21-25, 2022 in Spokane, WA
- ROSA will be helping convene a 2-day Symposium on ***Offshore Wind, Fish, and Fisheries – Emerging Knowledge and Applications*** (August 22-23)
- Seventeen talks plus panel and discussion
- Hoping to have hybrid in-person/remote session
- Presentations from 2021 AFS symposium available on ROSA website: <https://www.rosascience.org/afs-symposium-resources>
- Contact Mike with questions (mike@rosascience.org)

Methods for Surveying Commercial Clam Stocks Using a Hydraulic Dredge



Dr. Daphne Munroe & Dr. Jason Morson
Rutgers University, Haskin Shellfish Research Lab

Dr. Sarah Borsetti
Virginia Institute of Marine Science

Dr. Daniel Hennen
NOAA Northeast Fisheries Science Center

Advice about:

- Survey platform
- Sample collection
 - Data to collect
 - Tows
 - Effort
- Consideration for controls (if necessary)
- Calibration of gear

In review as Technical Note with Fisheries Research

Challenges to Pre-Construction Fisheries Surveys



Challenges to Pre-Construction Fisheries Surveys

- Panelists:
 - Ursula Howson, BOEM
 - Doug Christel, Nick Sisson, & Ryan Silva, NOAA Fisheries GARFO
- Moderator:
 - Pat Field, CBI





BOEM Bureau of
Ocean Energy Management

Offshore Wind Fisheries Monitoring Survey Issues

June 24, 2022

Ursula Howson, PhD | ROSA Advisory Council Meeting

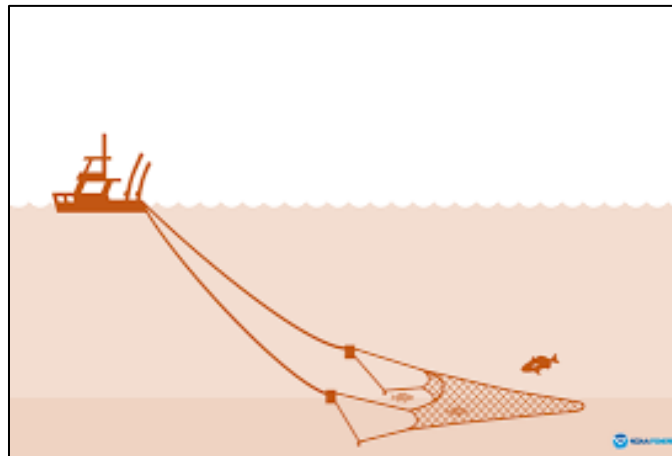
Overview of OSW Fisheries Monitoring Surveys

- Developer creates fisheries monitoring plan w/agency input
 - BOEM + cooperating agencies
- Fisheries monitoring plan becomes required condition in ROD and COP Approval Letter (permit).
- Surveys
 - Pre-Construction: pre- and post-ROD
 - Construction: post-ROD
 - Post-Construction: post-ROD



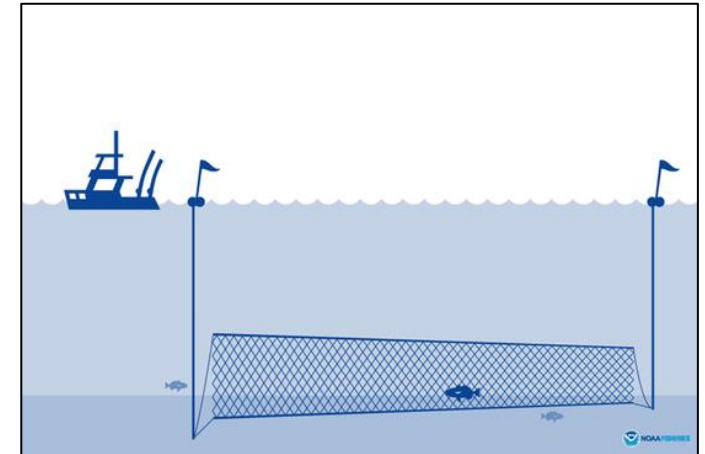
Pre-Construction, Construction, Post-Construction Surveys

- Pre-ROD pre-construction fisheries surveys
 - ESA Take coverage - currently developer responsibility
 - Planned programmatic ESA BA/BiOp – Q3 2023
- Post-ROD pre-construction, construction, post-construction fisheries surveys
 - Project's Section 7 ESA BA/BiOp



BOEM Information / Next Steps

- BOEM does not require specific gear or duration (BOEM’s guidelines = “toolbox”) Certain survey gear – higher risk of ESA/protected species take
 - Trawls and Fixed Gear (gillnets, traps w/lines)
- Next Steps
 - Programmatic BA/BiOp (Q3 2023)
 - BOEM Fisheries Survey Guidance update (pending)
 - Specific survey gear types not required
 - Alternatives to gear w/increased risk of take
 - BMPs to reduce impacts to protected species
- Possible short-term challenges in conducting certain surveys until Programmatic BA/BiOp completed*



* (Can't assume authorized take – determined during consultation)

BOEM

Bureau of Ocean Energy
Management

BOEM.gov



Ursula Howson, PhD | ursula.howson@boem.gov



NOAA
FISHERIES

**Greater Atlantic
Regional
Fisheries Office**

Offshore Wind Energy Fishery Survey Issues

Douglas W. Christel
Nick Sisson
Ryan Silva

June 24, 2022



Source: www.workboat.com

Two Main, but Separate Questions

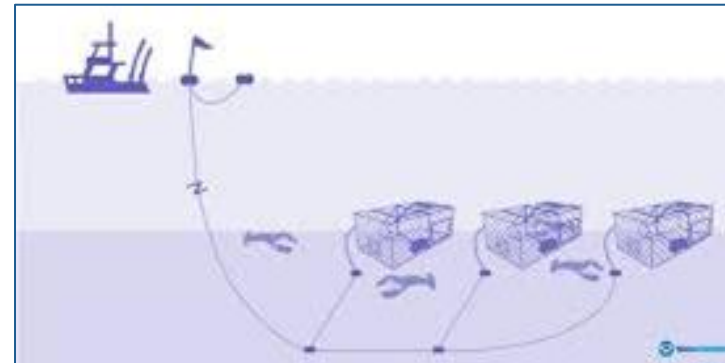
1. Is the survey fishing or scientific research?

- Will survey be conducted on a research vessel?
- Will survey be conducted by a scientific institution?

2. Will survey interact with protected species?

- Will survey activities potentially interact with protected species?
- Will survey activities affect designated critical habitat?

Answering these questions determines next steps and timing issues



Scientific Research vs. Fishing

Scientific Research:

- Survey conducted on a scientific research vessel controlled by a scientific institution
- *Letter of Acknowledgement* confirms research
- NO specific protected species take coverage

Commercial Fishing:

- Typical commercial fishing activities and gear
- EFP may exempt vessels from fishing regulations
- May have protected species take coverage

Early Coordination and Planning

- **Initiate coordination >3 years before COP approval**
- See ROSA Project Monitoring Framework/Guidance

ESA Options

Eliminate/reduce risk of interactions through BMPs

- Potentially avoid the need for ESA take coverage

ESA Section 7 Consultation by NMFS/BOEM

- Fishery-specific for surveys under an EFP (NMFS)
- Programmatic for pre-ROD/construction surveys (BOEM)
- Project-specific for post ROD surveys (BOEM)

ESA Section 10 Permit by PI/developer

- For incidental take from scientific research activities



MMPA Options

MMPA prohibits take of marine mammals

- Exception for unintentional take if commercial fishing
- Coordinate with NMFS to determine if survey is commercial fishing

Letter of Authorization

- Covers mortality or serious injury for some activities
- Could provide take coverage for up to 5 years
- Only issued if take is likely and could not be mitigated

Incidental Harassment Authorization

- Covers non-lethal take or non-serious injury
- Could provide incidental take coverage for 1 year



Researchers
Response to the
Challenge,
Innovative Tools,
Trade-Offs and
Implications



Researchers Response to the Challenge, Innovative Tools, Trade-Offs and Implications

- Panelists:
 - Robert Ruhle, F/V Darana R
 - Kevin Wark, Endeavor Fisheries
 - Doug Zemeckis, Rutgers
 - David Bethoney, CFRF
- Moderator:
 - Mike Pol, ROSA





BREAK

Back @2:05 ET



Follow-up on
Fisheries
Resource Data
Production,
Storage, and
Accessibility
Report



Data Accessibility



- *Overview:* Regional data management, storage, and access identified as a priority focus area by the ROSA Advisory Council
- Committee: Bonnie Brady, Colleen Brust, Doug Christel, Tom Dameron, Greg DeCelles, Willy Goldsmith, Pat Halpin, Annie Hawkins, Fiona Hogan, Josh Kohut, Julia Livermore, Ruth Perry, Kathleen Reardon, Andy Lipsky, David Rudders, David Stormer, Kevin Wark, Carl Wilson
- *Update since December 2021:*
 - Committee feedback requested on revised report (December 2021 -February 2022)
 - Suggestions and edits compiled and set to RPS
 - Revisions incorporated into final report (late May 2022)

RPS Report Summary

1. Currently, privately collected data for which a database does not exist must be hosted on the developer's website or made directly available to users by request. This includes most types of operational data.
2. Data should be collected in a format that is compatible with existing surveys and databases through development and inclusion of standardized protocols, effort data, and metadata.
3. OWE developers should emulate sampling protocols and gear designs consistent with regional-scale data collection programs wherever possible, but must also include surveys that can detect effects at their specific sites.

Data Accessibility

Start Tow	Time: <u>10:32</u>	Lat: <u>1</u>
End Tow	Time: <u>11:32</u>	Lat: <u>1</u>
Warp	<u>70</u>	fm
Other:	Foul tow:	Black
Gear Condition at Deploy	some fish before	(see pic)

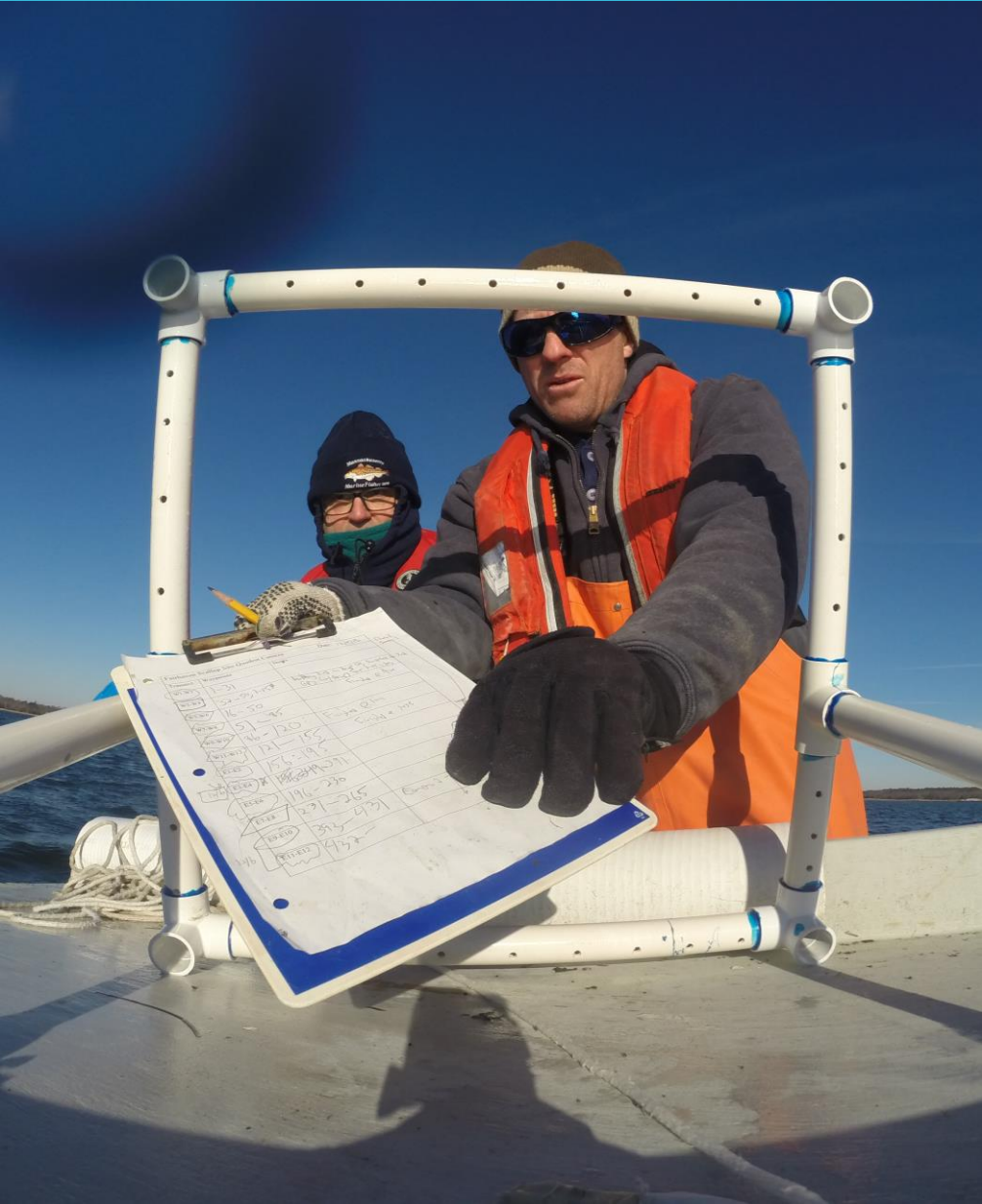
- Recommendations drafted and sent to Committee
- Committee met in May 2022, suggested revisions
- Revised recommendations sent to Committee with revised RPS report later that month for approval.
- Four members indicated acceptance; one partial acceptance; one strongly opposed.

Data Accessibility - Recommendations



1. The Statement of Work has been adequately addressed, and the report and the accompanying spreadsheet should be shared via the ROSA website and distribution to the ROSA network following addition of a disclaimer, recommended citation, summary of review process, and these recommendations. (The details of the disclaimer, etc., are still under development.)
2. The most critical regional need identified is storage, longevity, security, quality assurance and sharing of fisheries independent data related to offshore wind development. ROSA has begun working with relevant personnel at ACCSP and NEFSC and should continue this effort with other regional groups such as NEAMAP, SEAMAP, NROC and MARCO data portals, and IOOS, discussing lessons learned, Best Management Practices, data standards and next steps.
3. Building the structures that many stakeholders expect for OSW monitoring data will require dedicated time, money and investment including development of policies and agreements. This investment is beyond the scope of what ROSA can accomplish, and therefore ROSA will continue to advocate for inclusion of data handling and sharing plans by working with ROSA stakeholders, particularly developers and researchers, and via comments on draft documents, such as solicitations from state agencies for wind development, in meetings and elsewhere.
4. ROSA should also continue to expand the monitoring guidance by working to investigate, recommend, and, if necessary, develop data standards (data field requirements), and to encourage standardization of data collection, archiving, and access. ROSA will work with existing metadata guidance as the next step in this expansion. Examples of existing guidance and standards include the Darwin Core, ACCSP Standards, and the NEFSC Bottom Trawl Survey.

Data Accessibility- Next steps



- Finalize and distribute the RPS report plus recommendations.
- Continue to move forward with ASMFC/ACCSP and NEFSC for progress on data accessibility.
- Will Shoup and Mike are researching relevant data standards, focusing first on trawl and ventless trap surveys
- Will has initiated data requests to databases to test the processes
- Initiated working groups of researchers
 - Telemetry (J. Kneebone)
 - Others

Comments on Data Sharing

Jeff Kneebone,
New England
Aquarium



Regional
Research
Prioritization
Framework



Need for Regional Research Framework

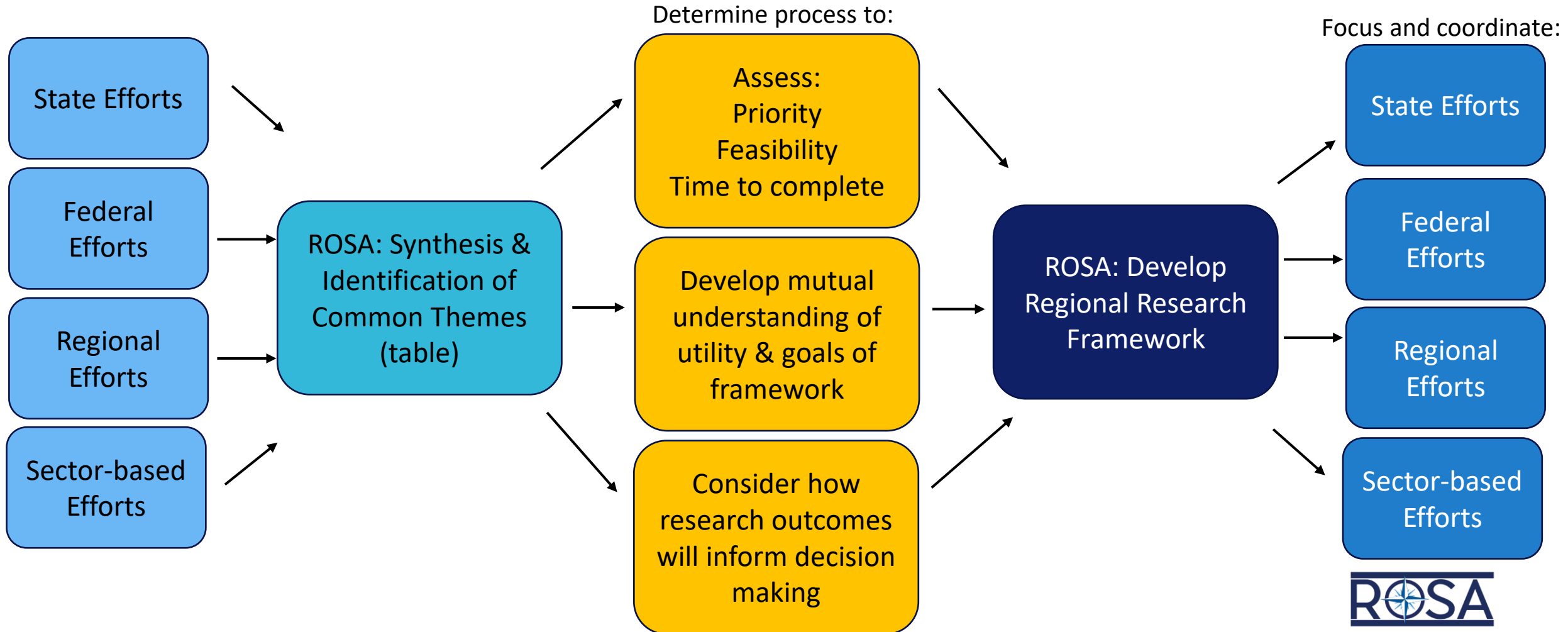


PARTNERSHIP
COOPERATIVE RESEARCH
DATA ACCESS
COMMUNICATION

- There are many good and thoughtful identified research needs from RODA's recent work to the joint effort in *Synthesis of the Science* to NYSERDA's *State of the Science*
- However, there is no shared framework or understanding of cross-sector prioritized research that could help focus existing resources now
- Several large state/developer funds are being established that are seeking to at least be informed by region-wide priorities

Regional Research Framework

Many efforts have identified research gaps and needs. What's missing is a Choice-Making process to refine, hone and prioritize these topics



Regional Research Framework – Next Steps



- Refine synthesis of research priorities
- Work on building database of ongoing OSW/Fisheries research, including potential project visualization tool with RWSC
- Develop prioritization criteria for sorting lists
- Gap analysis between research priorities and ongoing research
- Identify opportunities for collaboration and avenues to avoid redundancy with RWSC, NY TWGs, and others

Next Steps

- July meetings to continue discussions about research prioritization and innovative sampling strategies
- AFS symposium August 22-23
- ROSA staff will continue to address priority topics with committees and research advisors
- New website anticipated late summer 2022
- Please reach out to us with topics of interest for meetings or sector-specific calls (lyndie@rosascience.org or mike@rosascience.org)
- Next quarterly meeting will likely be September 2022